

From Employment  
to Settlement

# Chungnam Foreign Global Center

## Directions



**CEPA** CHUNGNAM ECONOMIC  
PROMOTION AGENCY

Chungnam Foreign Global Center

Chungnam Economic Promotion Agency, Asan Branch :  
1F, 223 Eunhaengnamu-gil, Yeomchi-eup, Asan-si,  
Chungcheongnam-do

tel. 041-404-1479 • cfgc@cepa.or.kr

## Education and Experience



What Makes  
Chungnam Special?



### Korean Language Education Programs

**Learn Korean,  
Adapt to Life with Ease!**

- **Target Group:** Foreigners Residing in the Province
- **Support Offered:** Early Adaptation Assistance & Communication Skills Enhancement

New 3rd-Semester Class Added to the Korea Immigration & Integration Program (KIIP)	175 people
Korean Language Education for Foreign Residents to Support Social Integration and TOPIK Certification	25 people
Pre-Evaluation Preparation Class for the Korea Immigration & Integration Program (KIIP)	45 people
Field-Oriented Korean Language Class	10 companies
Operation of Regional Learning Centers for KIIP (Ministry of Justice)	60 people

### Support for Cultural Experience Activities and Policy Promotion

**Discover What Makes  
Chungnam Special.**

- **Target Group:** International Students and Foreigners Residing in the Province
- **Support Goal:**
  - Promotion of Foreign Resident Policies & Network Activation in Chungnam
  - Promotion of Chungcheongnam-do from a Foreigner's Perspective
- **Support Programs:**
  - Operational of Personnel Assisting Foreigners (Supporters)
  - Cultural Experience Group Operation and Activities
  - Activities to Enhance Understanding of Foreigners and Promote Policies

### Best Practices for International Student Employment



- Promotional Video on Best Practices for International Student Employment
- Vietnamese Students' Employment Stories: From Job Placement to Visa Acquisition through Chungnam's Foreign Employment Support Program



## Governance Cooperation



### Overseas Recruitment Seminars

**Global Chungnam Residents from  
Around the World**

- Attracting Outstanding Talent Tailored for Local Companies
- Promotion of Chungnam Province Overseas and Matching Local Companies with Foreigners
- Hosting Foreign Talent Recruitment Seminars by Chungnam Economic Promotion Agency Overseas Offices

### Research on Establishing Talent Attraction & Support Strategies

**Attracting Foreigners and  
Further Developing into  
an Integrated Center**

- Survey and Assessment of Foreign Residents in Chungnam
- Linkage with Centers for Foreigners in Chungnam and Development of Integrated Management Plans
- Comprehensive and Systematic Recommendations for Foreign Resident Policies

Industry-Academia-  
Government Collaboration



### Practical Council Meetings and Policy Workshops

**Attracting Foreign Residents  
Across Chungnam Province**

- Establishment of a Comprehensive Policy Network and Expert Collaboration System
- Establishment and Operation of the Provincial Foreign Resident Attraction Committee
- Operation of a Practical Council Meetings with Agencies, Companies, and Universities

From Employment  
to Settlement



# Chungnam Foreign Global Center

**CEPA** CHUNGNAM ECONOMIC  
PROMOTION AGENCY

Chungnam Foreign Global Center

# Chungnam's Foreign Employment Support Program(FESP)



## Technical Training & Visa Assistance



### What is the Chungnam's Foreign Employment Support Program?

Supporting International Students' Financial Independence and Addressing Industrial Labor Shortages

Job Opportunities in Service, Agriculture, and Manufacturing

In Connection with the Regional Visa Program, Enhancing Job Opportunities

**Businesses** | Support of 75% of minimum wage/month

**International Students** | Transportation Allowance and Visa Conversion Fee Support

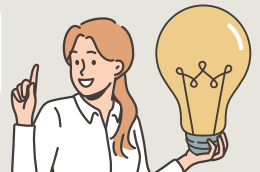
**University** | Support of ₩300,000 per person in Education and Training Fee

- Target Group: Universities, Companies, and International Students in the Province
- Program Duration: Open for Applications Until the End of the Year ※ Subject to Available Budget
- Eligibility (Company)
  - Chungnam-Based SMEs and Mid-Sized Companies
  - Companies Eligible for the Standard Field Training Semester Program
  - Companies Eligible to Sponsor **E-7 and F-2-R Visas**
  - Companies Able to Cover Monthly Costs of KRW 2.1 Million or More



What is the Foreign Employment Support Program?

It is a program run by the Foreign Global Center that supports international students in finding employment.



### Pre-job Training (required)

**Part-time Employment**  
Basics · Employment Skills (8 hours)

**Field Training and Internship**  
Basic · Employment · Job Competency (40 hours)

Program	Part-time Employment	Field Training	Internship
Target Group	1st & 2nd Year Undergraduate (1st Year in Associate Degree)	3rd & 4th Year Undergraduate (2nd year in Associate Degree)	Graduates / Graduate Students
No. of Beneficiaries	135 Students	55 Students	10 Students
Applicable Industries	Manufacturing/Agriculture & Fisheries/Hotel & Other Services (excluding convenience stores and restaurants)	Major-Related All Industries	All industries regardless of major
Support Methods	Transportation Allowance ₩ 100,000/month ※ Support for up to 6 months	Settlement Allowance ₩ 200,000/month ※ Support for up to 6 months  ① Support of 50% of minimum wage/month ※ ₩ 1,048,130 (rounded down to the nearest won) ② Mentor Allowance 100,000/month ※ Support for up to 6 months ③ Governor's Award for Excellent Companies  Student Recruitment & Training Fee: ₩ 300,000 per person	Settlement Allowance: ₩ 200,000/month ※ Support for up to 3 months  ① Support of 75% of minimum wage/month ※ Subsidy is paid in staggered installments: 25% in Month 1, 50% in Month 2, 75% in Month 3 ※ ₩ 1,572,203 (rounded down to the nearest won) ② Mentor Allowance ₩100,000/month ※ Support for up to 3 months ③ Governor's Award for Excellent Companies  Student Recruitment & Training Fee: ₩ 300,000 per person

We're Here to Support You.



### Technical Training

#### Matching Employers' Needs with International Students' Preferences

- Target Group: Foreign residents in Chungnam in need of technical skills
  - Support Offered Technical Training Programs Tailored to the Needs of Local Companies
  - PLC, DLC, HWP, Excel, Forklift, Driving, Welding, etc.
- ※ Subject to change depending on operating conditions

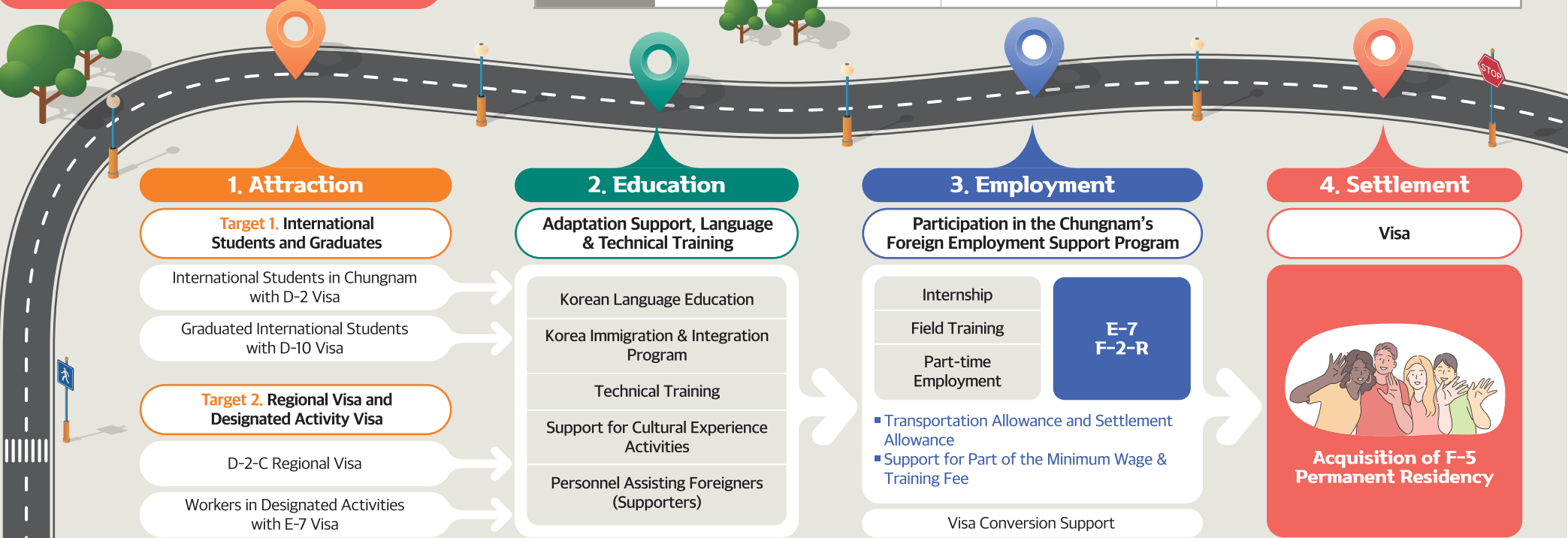


### Visa Conversion

#### Visa Conversion Support - Don't Go Alone!

- Target Group: International students in the Chungnam's Foreign Employment Support Program
- Support Offered:
  - Support for Foreigner Visa Change (Application) Fees
  - Provision of Counseling and Professional Consulting by Administrative Officers

### Program Overview



**CEPA** CHUNGNAM ECONOMIC PROMOTION AGENCY  
Chungnam Foreign Global Center

Chungnam Economic Promotion Agency, Asan Branch :  
1F, 223 Eunhaengnamu-gil, Yeomchi-eup, Asan-si, Chungcheongnam-do  
tel. 041-404-1479 · cfcg@cepa.or.kr